

Tschanz Rare Books

List 179

New Arrivals

Usual terms.

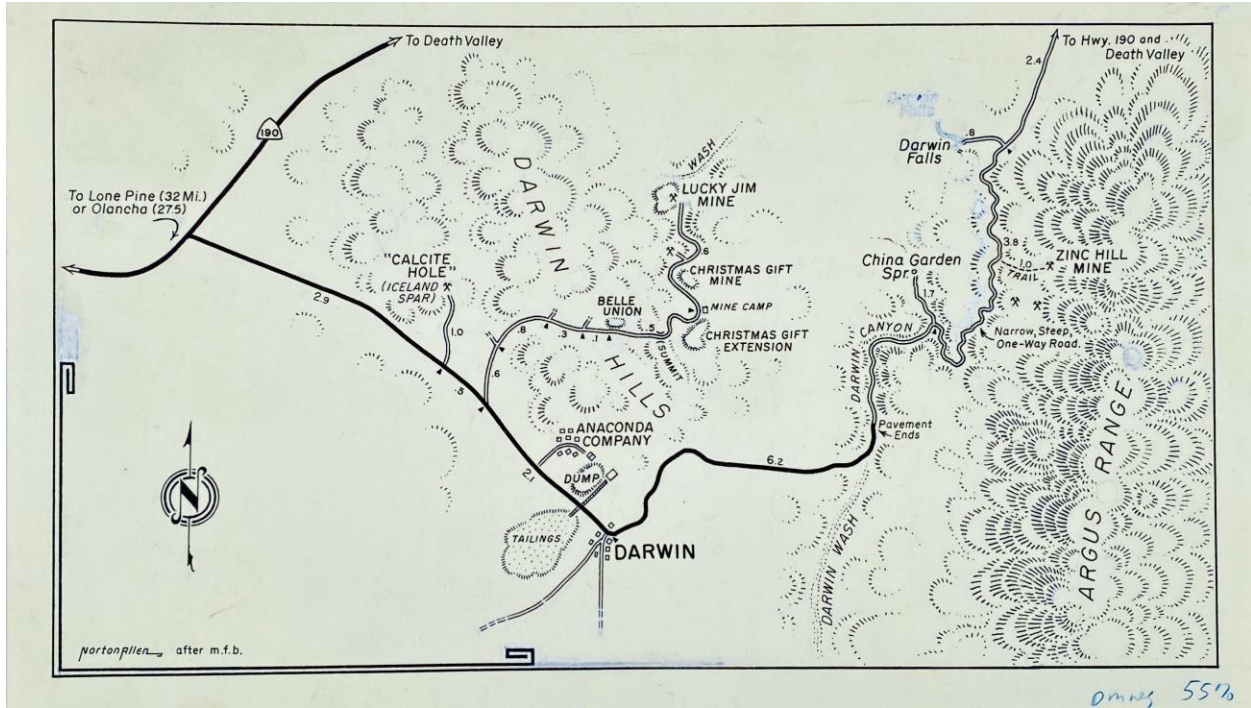
Items subject to prior sale.

Call, text: 801-641-2874

Or email: kent@tschanzrarebooks.com

to confirm availability.

Visit us at: 1354 South 2100 East in **beautiful Salt Lake**



1- Allen, Norton. [Darwin, California]. [Palm Springs, CA]: [Desert Magazine], [1963]. Manuscript map [21.5 cm x 36.5 cm] / [8.5" x 14.5"] ink on paper. Near fine.

This map appears in the Desert Magazine issue for February of 1963 on page 18, and accompanies the article 'Mineral Mecca at Darwin' by Mary Francis Berkholz. This excellent map depicts the Darwin Hills mining district near Darwin, California. The Calcite Hole, Anaconda Company, Belle Union, Lucky Jim Mine, Christmas Gift Mine, Zinc Hill Mine, and Darwin Falls. Norton Allen (1909–1997) was an American artist and archaeologist who worked in the American Southwest. For nearly four decades he was one of the in-house draftsmen who drew the outstanding maps that appeared in many issues of Desert Magazine. Unique.

"A visit to the Darwin District is not complete without a stop at beautiful Darwin Falls. Here, from a sharp cleft in the barren hills, a ribbon of life-giving water dance down the fluted walls into the fern grotto and pool below. A quiet, peaceful, oasis hidden in the heart of one of the Mojave Desert's most arid regions."

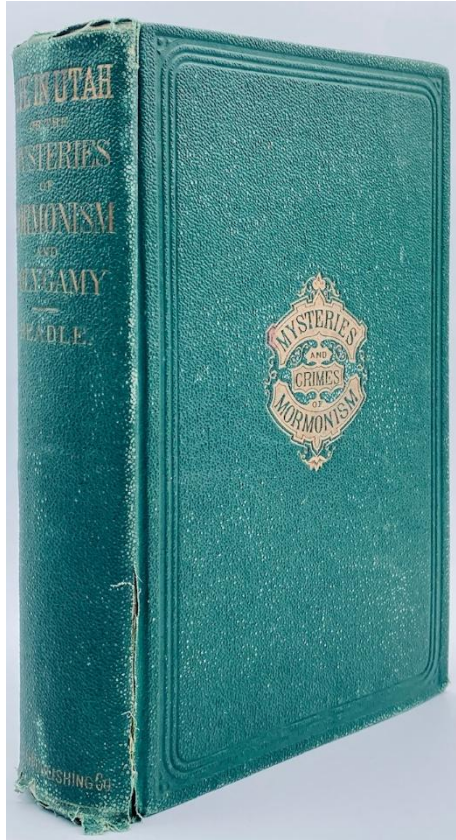
\$300



2- Bateman, Edward. **Joseph Smith Daguerreotype**. Salt Lake City: 2025. Digital print the size of 1/4 plate daguerreotype in 3-d printed case.

Faux vintage daguerreotype of the Prophet Joseph Smith. Edward Bateman is an artist and Assistant Professor in the Department of Art and Art History at the University of Utah. He received his MFA from the University of Utah in 2003 and joined the faculty in 2008. That same year he was awarded the Salt Lake City Mayor's Award for his contributions to the arts. His work is in the collections of The Metropolitan Museum of Art, Harvard University, Art Institute of Chicago, Stanford University, Getty Research Institute, New York University, Columbia University, Amon Carter Museum Library, and George Eastman House, among others.

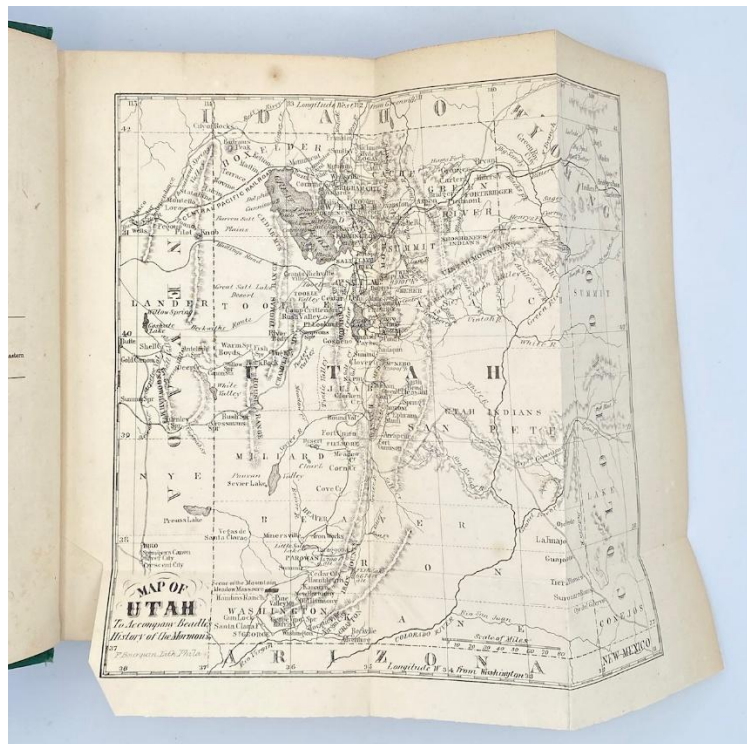
\$350



3- Beadle, John Hansen. **Life in Utah; or, the Mysteries and Crimes of Mormonism. Being an Expose of the Secret Rites and Ceremonies of the Latter-day Saints, with a Full and Authentic History of Polygamy and the Mormon Sect from its Origin to the Present Time.** Philadelphia: National Publishing Company, 1870. First Edition, Second State. 540pp. Octavo [22 cm] Green cloth with the title gilt stamped on the front board and backstrip. Gentle wear to corners of boards with minor wear to foot of front hinge. Fold-out map and portraits present.

Second state with four pages of advertisements at the end and 'Boston MA' listed under the publisher. This best-selling work became one of the quintessential anti-Mormon works, that helped to perpetuate many of the stereotypes of Mormondom to the western world. "For more than thirty years the world has been horrified, startled and perplexed by the audacity and success of a sect calling themselves Mormons. Though founded in fraud, this sect has succeeded in spite of all opposition, until it is to-day the standing reproach of our country." - publisher's remarks. Flake/Draper 345. Eberstadt 114: 546. Auerbach 57.

\$150



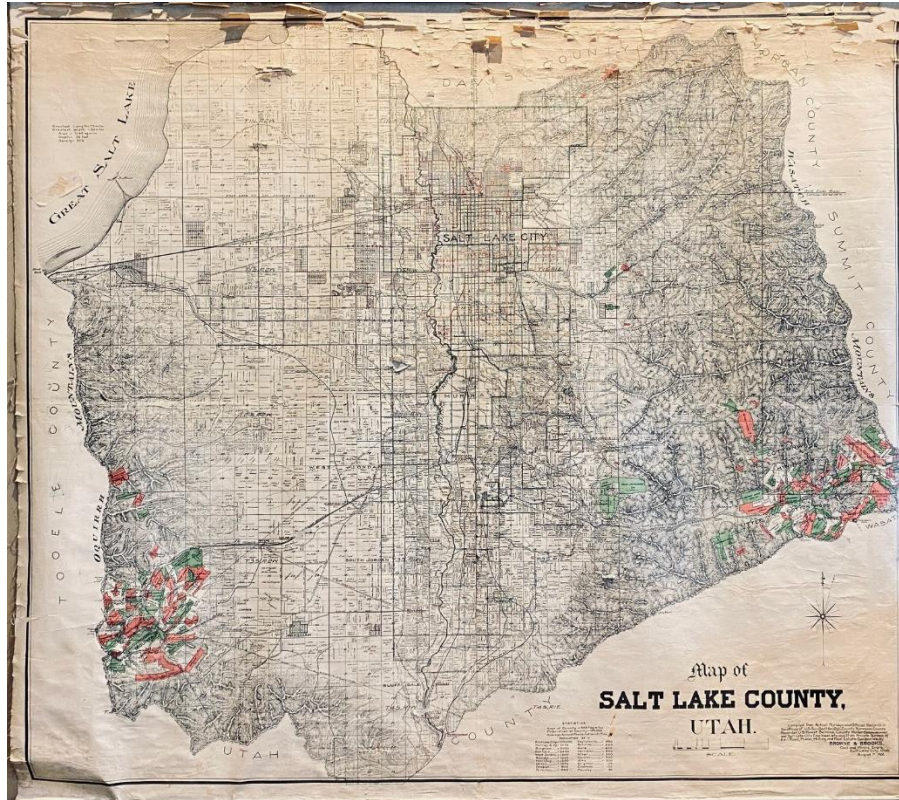
LAKE BONNEVILLE RECREATION AREA



4- Boutwell, Jim. **Lake Bonneville Recreation Area**. [Salt Lake City]: Creative Glass and Arts, 1986. Color poster [46 cm x 61 cm] Near fine.

Poster shows the Angel Moroni and the western steeple of the Salt Lake Temple poking out of an imagined Lake Bonneville with two wind surfers in the background. My first interaction (and probably others) with this image, was the old Juniors on 5th South where a similar poster hung next to the door. I was really excited to find such a nice example of this. Lake Bonneville was a prehistoric sea that once covered most of western Utah, eastern Nevada, and southern Idaho. The Great Salt Lake is a remnant of the once massive body of water.

\$150



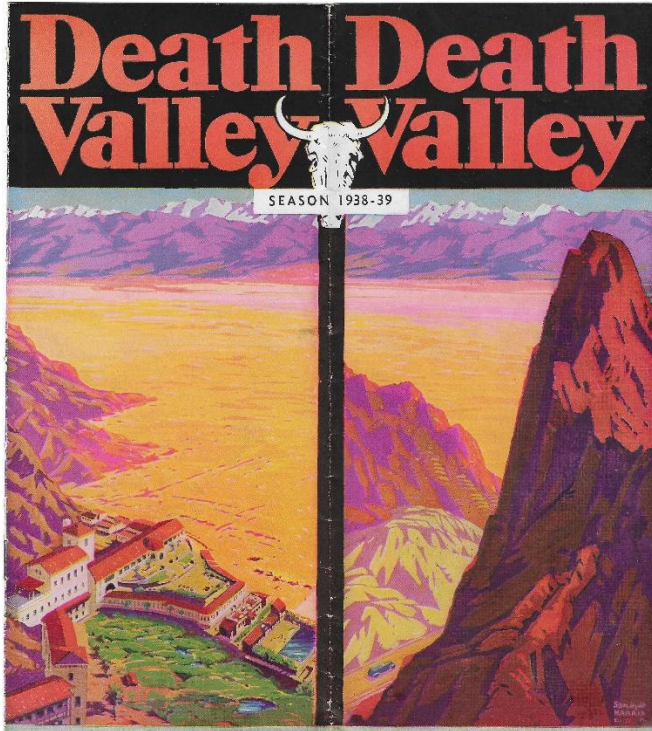
5- Browne & Brooks. **Map of Salt Lake County.** Salt Lake City: Utah Litho. Co., 1908. Map [147 cm x 167.5 cm] / [58" x 66"] linen backed and between wooden rollers. Map is chipped with loss at head and foot with wear to to extremities. A handful of chips across this very large map.

This highly detailed plat map locates wagon roads, railroads, distances between boundaries, pipe lines canals, and outlines the boundaries of the principal mining companies (including the smelters, mills, and railroad spur connections). Salt Lake City is shown with various ecclesiastical wards in colors, numbered streets and blocks and street car systems: the outlying summer resorts, small towns in the county in blocks and squares. Index of towns, populations, express routes, telegraph and telephone lines, mountains, lakes, rivers, and canals are all located.

"A New County Map. Browne and Brooks mining engineers, have completed a map of Salt Lake County, on one sheet, 5x6 feet, which it is claimed, shows the correct boundaries of the county for the first time."
- Deseret News (1908/5/19). We locate two institutional holdings (UChic and UU). Rare

\$6,200

[MORE IMAGES HERE](#)



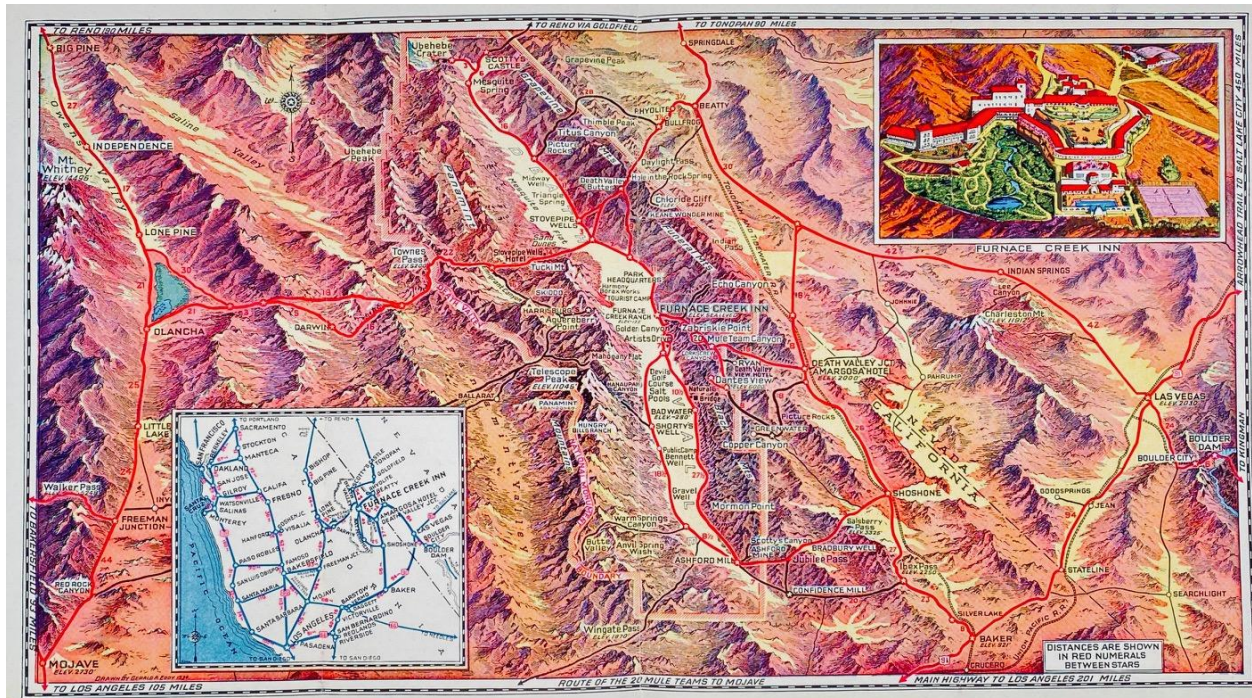
6- Death Valley Hotel Company. **Death Valley, Season 1938-39**. Los Angeles: Adcraft, [1938]. [7]pp. Square octavo [23 cm x 20 cm] that folds to digest size [23 cm x 10 cm] Color wrappers. About very good. Folds as issued some minor color offsetting to first two pages.

Illustrated guide for the prospective tourist to Death Valley with a description of the area and the lodgings offered by the Death Valley Hotel Company at the Furnace Creek Inn, Furnace Creek Camp, and the Amargosa Hotel. Also included are a list of points of interest and a mileage chart to Death Valley from points in California and Nevada. Excellent Bird's-eye map at the center by Gerald Eddy.

"Death Valley boasts, and rightfully so, the greatest contrasts to be found in this country.

Precipitate mountains and majestic canyons overlooking the extreme in flat, barren valleys; contrasts in elevations from 280 feet below sea level at Bad Water to 11,045 above at Telescope Peak, towering directly above, the greatest abrupt rise from base to tip to be found in the United States." - p.[1].

\$75





7- Edited by Milo M. Quaife. Fred Landon, Grace Lee Nute, Milo M. Quaife, Arthur Pound, Harlan Hatcher, W. Adolphe Roberts, Frederic E. Van De Water, Dale L. Morgan, Alfred Jackson Hanna and Kathryn Abbey Hanna, George and Bliss Hinkle. **The American Lake Series: Lake Huron - Lake Superior - Lake Michigan - Lake Ontario - Lake Erie - Lake Pontchartrain - Lake Champlain and Lake George - Great Salt Lake - Lake Okeechobee - Sierra-Nevada Lakes.** Indianapolis: The Bobbs-Merrill Company, 1944-1949. Limited First Editions. 10 volumes. Octavos [22 cm] Green cloth with the titles gilt stamped on the front boards and backstrips. Gilt stamped lake outlines on front boards. Nice map endsheets and pastedowns. All volumes in jackets. All about very good in like jackets. Tipped-in leaf at the front of all volumes that are signed by the respective authors.

The American Lake Series was likely inspired by the success of Farrar & Rinehart's popular Rivers of America series, and like the 'Rivers' series, was intended for the general reading public and were written by historians of note. The stated intention was to provide an accurate history of the role the individual lakes played in the settling of its environs, the development of American commerce, and the roles they may have played in the wars in America. Quaife wrote introductions for all ten titles, providing information about the authors and their knowledge of the subject lake and its region. Complete run of this sought after set, each with tipped in signed leaf. This is the only complete set of the 'American Lakes' series that we have encountered or handled. Rare. Fitzgerald AL1a, AL2a, AL3a, AL4a, AL5a, AL6a, AL7a, AL8a, AL9a, AL10a

\$1,400

[MORE IMAGES HERE](#)

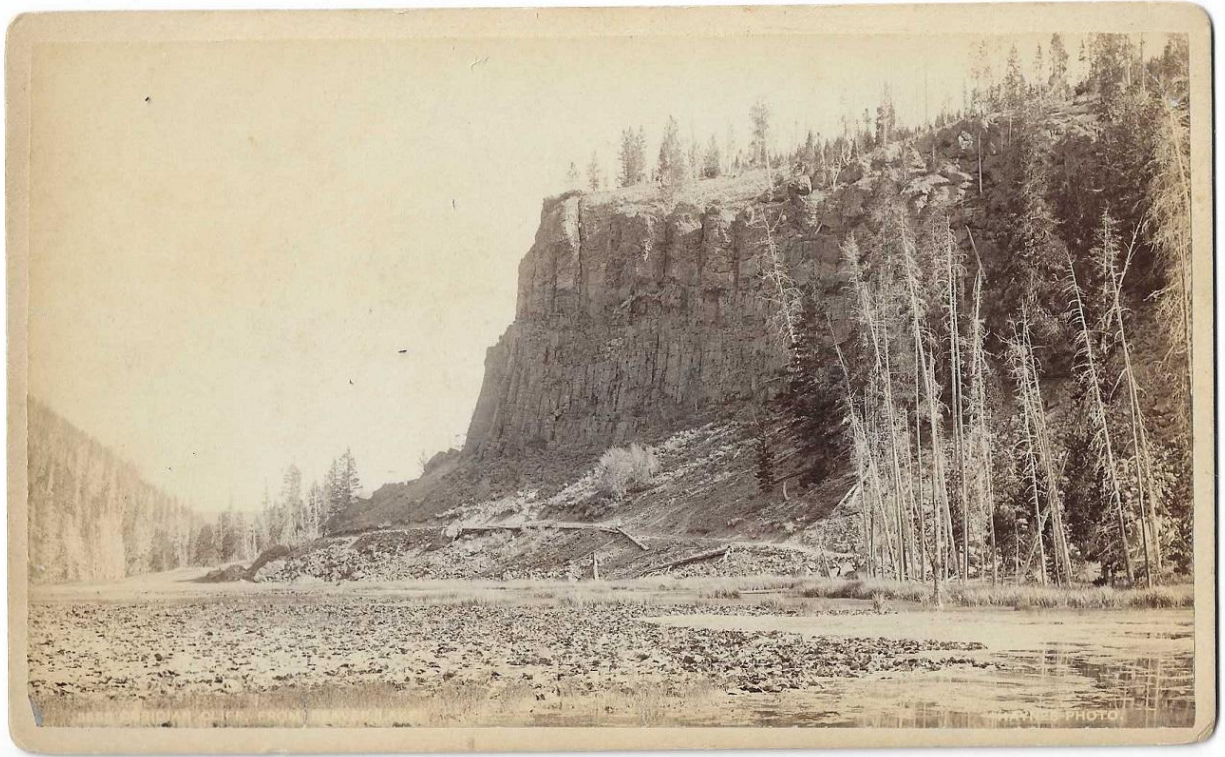


8- Grey, Zane. 'Zane Grey's New Story "Tappan's Burrow" Complete in the June Number of The Ladies Home Journal 15¢ Now on Sale €15'. Belleville, NJ: Sweeney Litho. Co., 1923. Cloth banner [34" x 45"] with printed advertisement and portrait. Corners folded back with grommets. Gentle overall fading. Includes the Ladies Home Journal issue with this story.

Large advertising banner produced for the Ladies Home Journal to promote the Zane Grey story 'Tappan's Burrow' that appeared in the June issue of 1923. This story tells the tale of a prospector named Tappan and his loyal companion, a burro named Jenet. 'Tappan gazed down upon the newly-born little burro with something of pity and consternation. It was not a vigorous offspring of the redoubtable Jennie, champion of all the numberless burros he had driven in his desert prospecting years. He could not leave it there to die. Surely it was not strong enough to follow its mother. And to kill it was beyond him.'

Zane Grey (1872-1939) was the author of over 90 novels, and is best known for the classic work 'Riders of the Purple Sage'. His novels and story lines became the source of 112 movies, several feature comic books, serial magazine articles, and the TV series 'Zane Grey Theater'.

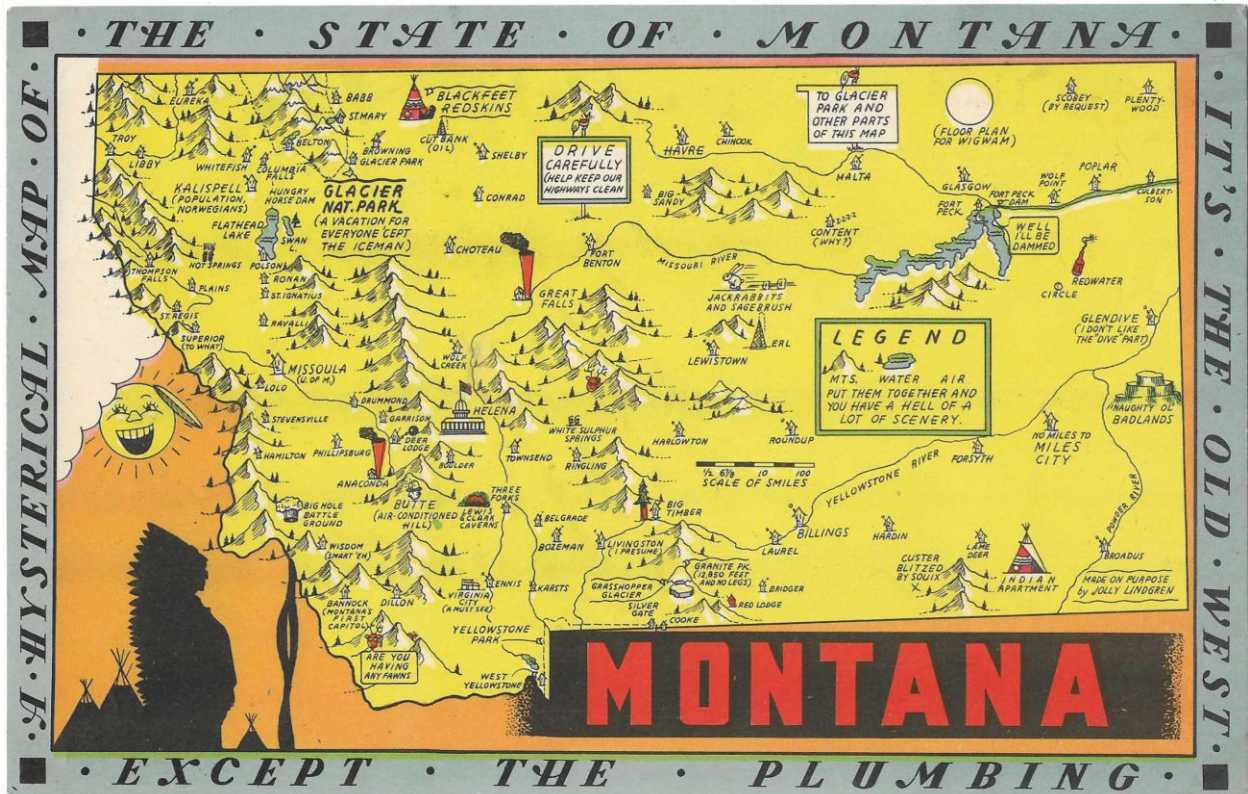
\$750



9- Haynes, Frank Jay. **Obsidian Cliff from Beaver Lake.** Fargo, DT: F.J. Haynes, Official Photographer N.P.R.R., (c.1890). 3553. Boudoir cabinet card. Albumen photograph [12.5 cm x 20 cm] on a tan mount [13.5 cm x 21.5 cm] with a Haynes backstamp. Title in the negative.

View of Obsidian Creek running in front of the Obsidian Cliff formation near Mammoth Hot Springs. Frank Jay Haynes (1853-1921) was employed by the Northern Pacific RR in 1875 to take pictures along their route from Minnesota to the West Coast for advertising and promotional purposes. From 1884 through 1915 Haynes operated a lucrative service industry in Yellowstone National Park making and selling souvenir photographs, taking pictures of tour parties, and publishing graphic souvenirs. F. Jay Haynes was known as the "Official Park Photographer."

\$150



11- Lindgren, Jolly. **A Hysterical Map of the State of Montana - It's the Old West Except the Plumbing.** Spokane, WA: Lindgren-Turner Co., (c.1945). Illustrated king size mapcard [22 cm x 14 cm] printed in color. Card is bright and in nice condition. Divided back.

Charming illustrated map of the Treasure State. Attractions and sites are located, including lakes, rivers, geologic features, towns, etc. "Made on purpose by Jolly Lindgren"

The Lindgren brothers of Spokane, Washington, were commercial sign makers through the 1920s, as the economic depression of the 1930s took hold in the once prosperous Pacific Northwest, Jolly Lindgren began drawing maps of western National Parks (Yosemite, Yellowstone, Zion, Bryce, Grand Canyon, Rocky Mountain and others) sites and towns (Death Valley, Grand Coulee, Lake Tahoe, Jackson Hole, Black Hills, Puget Sound, Palm Springs) and western states (Washington, Oregon, Montana, California, Utah and likely others). These whimsical maps were named 'Hysterical Maps' and included many jokes and puns. These maps proved to be quite successful and were produced through the 1940s.

\$75



13- Macdonald-Wright, Stanton. **Santa Monica**. [Los Angeles, CA]: Kistler Printing, 1938. 1/28. Lithograph [35.5 cm x 45.5'] in black on hand-made paper [48 cm x 61 cm] Signed, initialed, and titled in pencil at the foot by Macdonald-Wright. Nice condition.

This lithograph was limited to 28 numbered copies, this is #20. Stanton Macdonald-Wright (1890–1973) was a pioneering American modernist painter and a key co-founder of Synchronism, the first American avant-garde art movement to achieve international recognition. During the Great Depression, he served as a director for the Southern California division of the WPA. He designed notable murals for the Santa Monica City Hall and Public Library.

\$875



14-[Mining] [Utah]. **Town of Newhouse.** (c.1890). Large format. Silver gelatin photograph [19.5 cm x 24 cm] on a black mount [30 cm x 25 cm] with a decorative white floral border and rounded corners. Title in the negative. Extremities of mount rubbed, more so at the corners.

View of Newhouse, Utah is a present-day ghost town, but at the turn of the twentieth century, it was a bustling silver mining town named for Samuel Newhouse. Located in the Wah Wah Valley western Beaver County on the western slope of the San Francisco Mountains, it was located a few miles from Frisco. Several buildings are shown, including an active smelter and stack. This is the only view of Newhouse that we have handled. Rare.

\$400

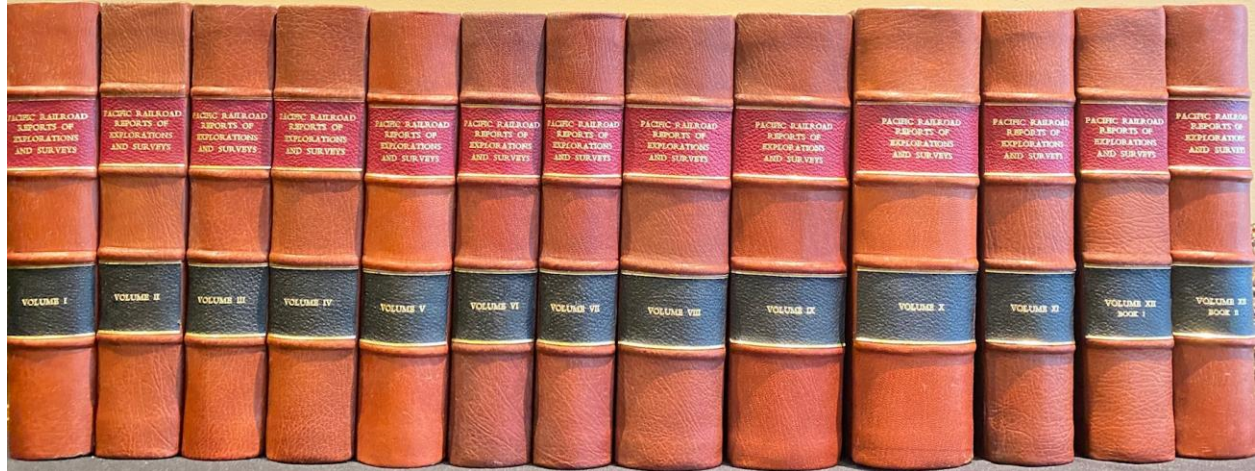


15- Moss, Bob. **Lovey Dovey Stuff**. [Clearfield, UT]: 2007. Mixed media on wood [12.5 cm x 60 cm]
Dated, titled, and signed on the back.

Bob Moss (1953-2011) was a visionary artist and musician who lived “out there” and on the fringe. Moss was enamored with the strangeness and beauty of the Deseret alphabet, and created art (mostly wood burnings) based on Brigham Young’s failed experiment. “I can say that Bob was, without a doubt, a significant artist and a brilliant, unique voice. He was a first-rate artist. He followed his muse. I can say Bob was a huge influence on me and many others. Bob was a true pioneer, taking his art where others were afraid to go.” – Trent Harris.

\$600





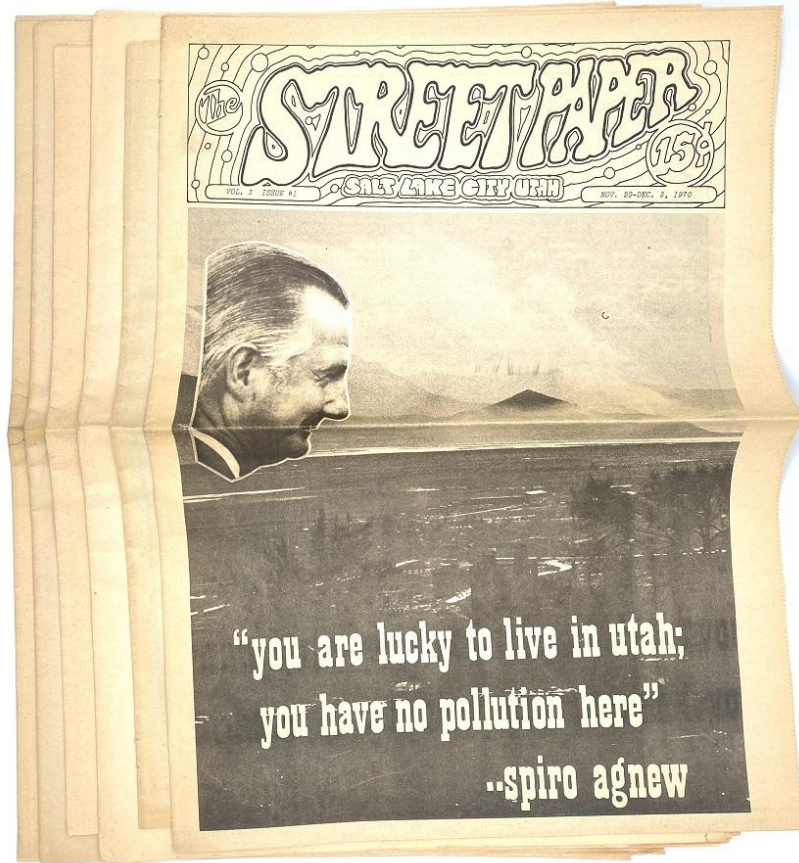
16- [Pacific Railroad Survey]. **Reports of Explorations and Surveys, to Ascertain the Most Practicable and Economical Route for a Railroad from the Mississippi River to the Pacific Ocean. [Pacific Railroad Survey]**. Washington DC: Beverley Tucker, A.O.P. Nicholson, Thomas H. Ford, 1855-1860. First edition, mixed issue. (Vols. II, III, VI, and XII - part 2, are from the Senate issue; all other volumes are from the House of Representatives issue). 12 volumes bound in 13. Quartos [30 cm] Nicely rebound in brown 3/4 leather over marbled boards with gilt stamped red and black leather labels on the backstrips. Complete with all maps and plates. Some minor foxing to a handful of plates. Splitting and tears to some of the maps in Volume 11. Overall, a nice set of this mammoth and important work.

The Pacific Railroad Surveys are the most important and massive compilation of exploration reports and data about the Trans-Mississippi West published in the era of exploration. Undertaken under the direction of then Secretary of War Jefferson Davis, the Pacific Railroad Survey increased the contemporary knowledge of the geography, topography, geology, of the America West, which to that time, was mostly terra incognita.

Included are the reports Humphreys, Stevens, Beckwith, Whipple, Warren, Williamson, Lander, and others. Numerous illustrations, folding maps, lithographic plates, colored lithographic plates (including hand-colored lithographs of birds), graphs and charts, etc. The numerous lithographs depict bird's-eye views of the region, native peoples of the areas explored, folding maps detailing newly discovered areas, etc. All things considered, the Pacific Railroad Surveys stand as a testament to one of the greatest government sponsored projects in our history, and as a foundation work for any collection devoted to Western Americana or cartography. Fales & Flake 63. Flake/Draper 9255. Howes P3. Paher 2044. Reese 138. Rittenhouse 442. Tweney 59. Wagner/Camp 262-267. Wheat 822, 823, 824, 843, 844, 845, 846, 852, 853, 864, 867, 874, 875, 877, 878, 879, 880, 881, 882, 898, 936. Zamorano Select 108.

\$8,500

[MORE IMAGES HERE](#)



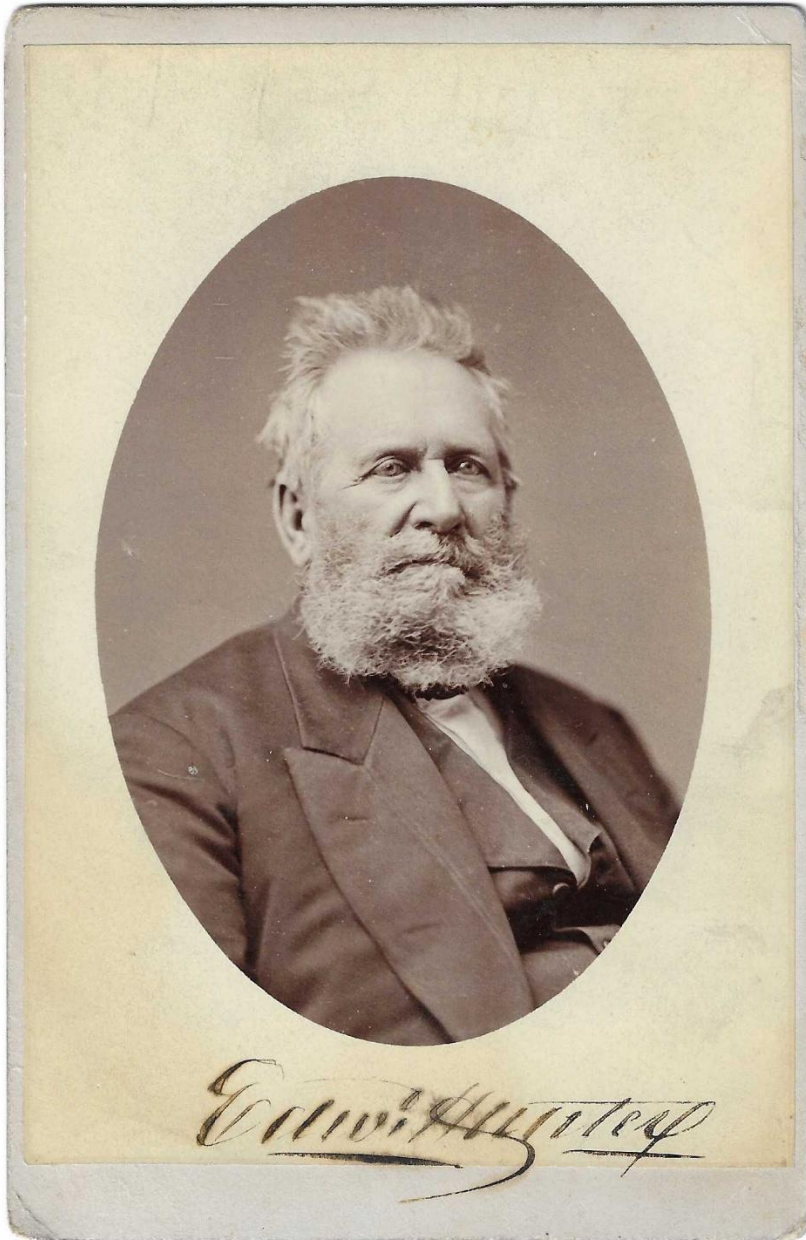
17- Roberts, Bruce. **Street Paper**. Salt Lake City: [Cosmic Aeroplane], November, 1970 - Spring, 1972. Volume 1, Number 1 - Volume 2, Number 1. 6 newspaper issues. [41 cm x 29 cm] / [16" x 11"] All issues near fine.

Complete run of Bruce Robert's alternative newspaper from Salt Lake City, that included local news on happenings, politics, music, and youth culture, with national news from the Liberation News Service: Vietnam war, LGTBQ, feminism, etc. Great local counterculture advertisements

"This paper is an attempt to provide a means of expressing what is important to you - defining our own lifestyle and becoming involved with positive programs that really begin to serve the needs of our community where the government's phony actions revealed their true intentions. We have denied the right of existence of the sterility of the new technological robot culture" - first issue.

Bruce Roberts (1949-2010) attended the University of Utah to pursue his interest in journalism and social justice, and during that time he edited the sports section of the Daily Utah Chronicle. He later founded The Street paper and co-founded the Cosmic Aeroplane Bookstore, which served as a focal point for the counter-culture hippie movement in Salt Lake City through the 1960s and 1970s.

\$350

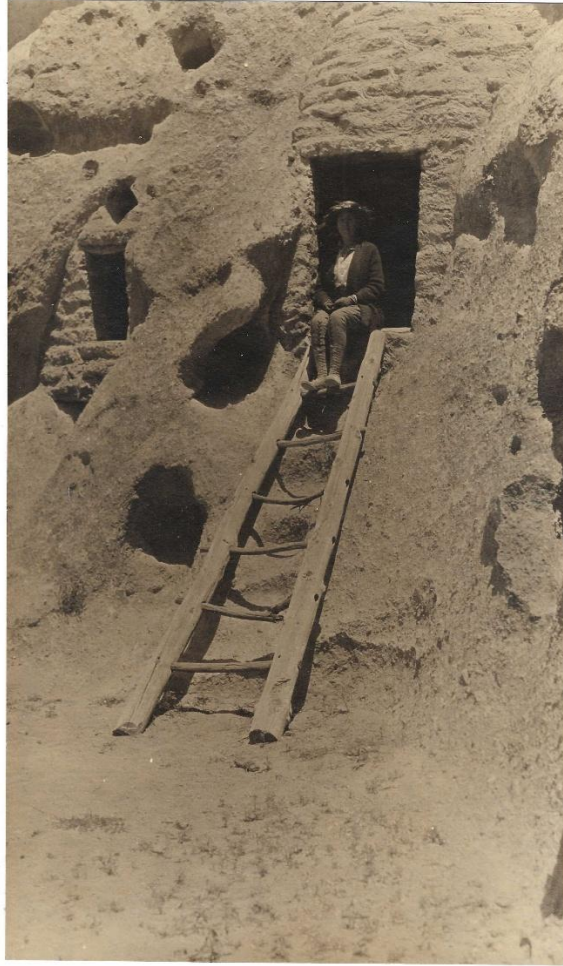


18- Savage, C.R. [Charles Roscoe]. **Edward Hunter**. Salt Lake City: C.R. Savage, Art Bazar, 1875. Cabinet card. Albumen photograph [15 cm x 10 cm] on a tan mount [16.5 cm x 11 cm] Strong contrasts. Gentle foxing to the back of the mount at the right side. Signed by Hunter at the foot of the image an on to the mount.

Edward Hunter (1793-1883) was born in Newton Township, Pennsylvania. He was a successful and liked businessman who converted to the fledgling Mormon Church in 1840 and was baptized by Orson Hyde. He soon relocated to Nauvoo, where he was trusted and influential, and shortly was called to serve in several offices. In 1851, Hunter was called as the third Presiding Bishop of the Church by Brigham Young - it was a calling that he would serve in until his death. Hunter is the longest serving Presiding Bishop.

Charles Roscoe Savage (1832-1909) was an accomplished and prolific photographer who lived successfully within his Salt Lake City community and traveled widely throughout the West taking photographs and befriending other important photographers of his day such as Carleton Watkins, Edward Wilson, Timothy O'Sullivan, Alfred Hart, and A.J. Russell. Savage took several of the West's most famous images at the celebration of the joining of the transcontinental railroads at Promontory Point, Utah in 1869. Savage also took the first photographs of what became Zion National Park.

\$2,350



19- [Stafford, Mr. & Mrs.]. **'Cave Dwellings of the Rito de los Fryoles' Collection of Bandelier Cabinet Cards.** Mesa Verde, CO.: (c.1917). 18 cabinet cards. Albumen photographs [27 cm x 15 cm] / [10.5" x 6"] each with neat manuscript titles on the backs. Strong contrasts and in nice condition.

Nice collection of photographs of the cliff dwellings at Fryoles Canyon. These images would have been shot shortly after the establishment of Bandelier National Monument and a decade plus before the construction of the lodge and other structures by the Civilian Conservation Corps that is the largest assembly of surviving CCC-built structures in a national park.

The photographers appear to have had unfettered access to the monument. Includes images of Tyuonyi, Long House, Talus House, and Rainbow House. Human presence in the area dates back thousands of years, but the permanent structures in Frijoles Canyon [Bandelier] begin near 1150 CE and seemingly flourished till they were abandoned in the 1500s. The inhabitants relocated to pueblos near the Rio Grande, such as Cochiti and San Ildefonso Pueblos, which have been occupied ever since. Due to the Canyon's remoteness early images, such as these, of the canyon and the dwellings are rare.

\$1,200

[MORE IMAGES HERE](#)



20- Standard Oil Company of California]. **California Oil Men [Photograph Album]**. 1913. [56]pp. Oblong octavo [28.5 cm x 39 cm] Side sewn tan calf covers. Album contains 88 silver gelatin photographs, 30 of which are panoramas [9 cm x 30 cm]. The others two sizes measure 11 cm x 6 cm (28) and 10 cm x 13 cm (30). Most of the images are nicely identified beneath in white ink, the unidentified (9) are placeable by the surrounding images. Most image have nice contrasts.

An exceptional vernacular photo album that documents the travels of a party from Standard Oil Company of California, as they work and play. The main participants are identified on the first page as D.E. Soule, Noble Bennett, and George Stone. The group is shown visiting oil fields in Bakersfield, Wyoming, Colorado, and Arizona (mines). With side trips to the Royal Gorge, the Grand Canyon, Pasadena, and Sutro Park in San Francisco.

\$2200

[MORE IMAGES HERE](#)

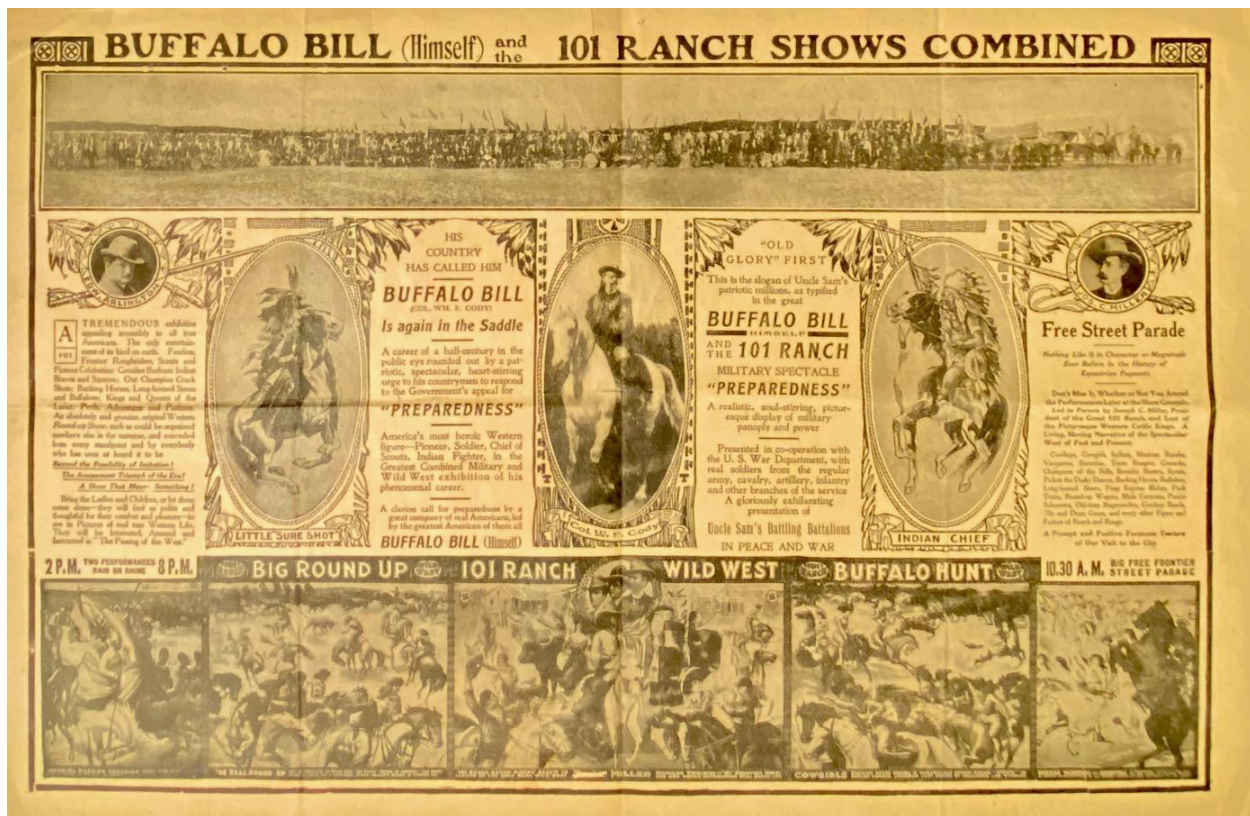


21- [Utah] [Salt Lake City] [Dairy]. **Salt Lake Dairy Company**. Salt Lake City: (c.1916). Boudoir cabinet card. Silver gelatin photograph [13 cm x 18 cm] on a black colored mount [18 cm x 13.5 cm] Gentle rubbing to extremities of mount. Upper left corner of the mount is chipped with a bump at the lower left corner.

View of two horse drawn carts with advertisements for the Salt Lake Dairy Company painted on the sides and a group of five men posing. The men shown are identified on the back as the owners and founders of the dairy (Albert Olsen, Ingval Olsen, Ancel Olsen, and Glen Olsen).

"It is with satisfaction that the residents of Salt Lake City turn to the Salt Lake Dairy company, a modern sanitary dairy, located at 236 West South Temple. The milk sold by this company is pure, has a high percentage in test and is handled in a sanitary manner." - Salt Lake Herald (1911-11-26)

\$300



22- [Wild West Show] [Buffalo Bill Cody] [Joe Miller]. **Buffalo Bill (Himself) and the 101 Ranch Show Combined.** North Adams, MA: [1916]. Broadsheet [35 cm x 53] printed on both sides in black and red ink. Vertical and horizontal folds at the center of the sheet. A few small closed tears.

Wild West Show poster for the 101 Ranch that featured an elderly Buffalo Bill Cody on horseback, "a combined show." This poster advertises two shows on June 7th at 2pm and 8pm at the far western Massachusetts town of North Adams. This collaboration represented the pinnacle of the Wild West show era, bringing together legendary figures for one last grand tour, with Buffalo Bill making his final public appearances with this show.

"Buffalo Bill and the 101 Ranch Wild West Show Combined crept into town about 7:30 o'clock from Albany, N.Y. where the show was given yesterday, and were switched to side tracks in the Boston & Albany railroad yard. A large number of people, including the full quota of sleepy-eyed boys, were on hand to watch the unloading of the big show." - North Adams Transcript (6/7/1916)

\$500